



### 11 Dartford Road Thornleigh NSW

4 

Offered to the market for the first time since 1989, this unique property represents a rare opportunity for business owners and investors alike. Zoned E1 local centre the property is permitted for a large array of uses, as is the design and floorplan of the full brick property. The versatile and large floorplan includes up to 15 separate office spaces, a open entry foyer, a storage room plus a large boardroom leading to the level rear yard. The options are endless from medical, consultancy or child care (STCA) to name a few. All this is located on a premium Thornleigh Street directly opposite Normanhurst West Public School and within 950m of Normanhurst Train Station, plus easy access to Hornsby and the M1 motorway.

? Zoned      E1.      Hornsby      LEP      2013

[For full version visit the website](https://www.allenandsheppard.com.au)

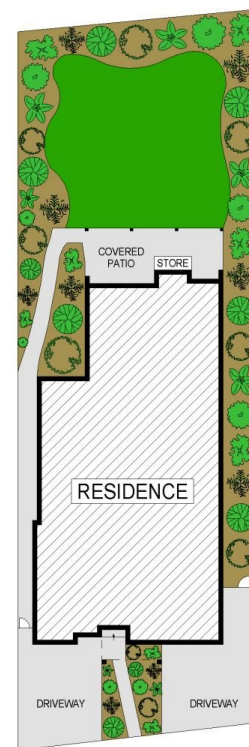
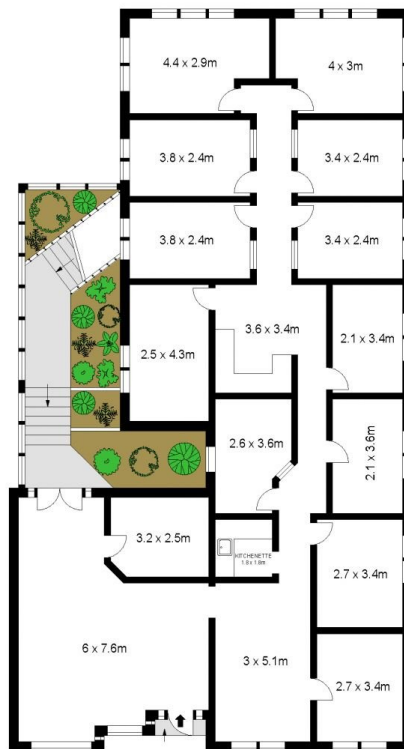
|                      |   |
|----------------------|---|
| <b>Type</b>          | : Offices   |
| <b>Price</b>         | : Expressions Of interest   |
| <b>Building Size</b> | : 302 sqm   |
| <b>Land Size</b>     | : 701 sqm   |
| <b>View</b>          | : <a href="https://www.allenandsheppard.com.au/sale/nsw/northern-suburbs/thornleigh/commercial/offices/8141066">https://www.allenandsheppard.com.au/sale/nsw/northern-suburbs/thornleigh/commercial/offices/8141066</a> |



**James Sheppard**  
02 9484 8888



**Craig Taylor**  
02 9484 8888



Dimensions are approximate. All information contained is gathered from sources we believe to be reliable. However we cannot guarantee its accuracy and interested persons should rely on their own enquiries.  
www.visionphoto.com.au

**11 DARTFORD ROAD, THORNLEIGH**  
APPROX. INTERNAL FLOOR AREA: 302 SQM

