



# ALLEN & SHEPPARD.



## 2 Lynne Place Hornsby NSW

4 2 3

This superb home is nestled on an expansive North to rear block and is perfectly situated in one of Hornsby's most desirable pockets. Offering light filled interiors, effortless indoor/outdoor living, tastefully updated interiors, and the promise of a low maintenance lifestyle of comfort and convenience. Positioned in a whisper quiet cul-de-sac, and easy walking distance to schools, shops, parks and two train lines. This home is ideal for families, downsizers and investors alike.

### Features:

- Main bedroom with built-ins, ensuite and air conditioning
- A further two well-proportioned bedrooms, both with built-ins
- The fourth bedroom is a great option if a work from home

[For full version visit the website](https://www.allenandsheppard.com.au)

**Type** : House  
**Price** : \$ 2,160,000  
**Land Size** : 739.8 sqm  
**View** : <https://www.allenandsheppard.com.au/sale/nsw/north-shore-upper/hornsby/residential/house/8134490>

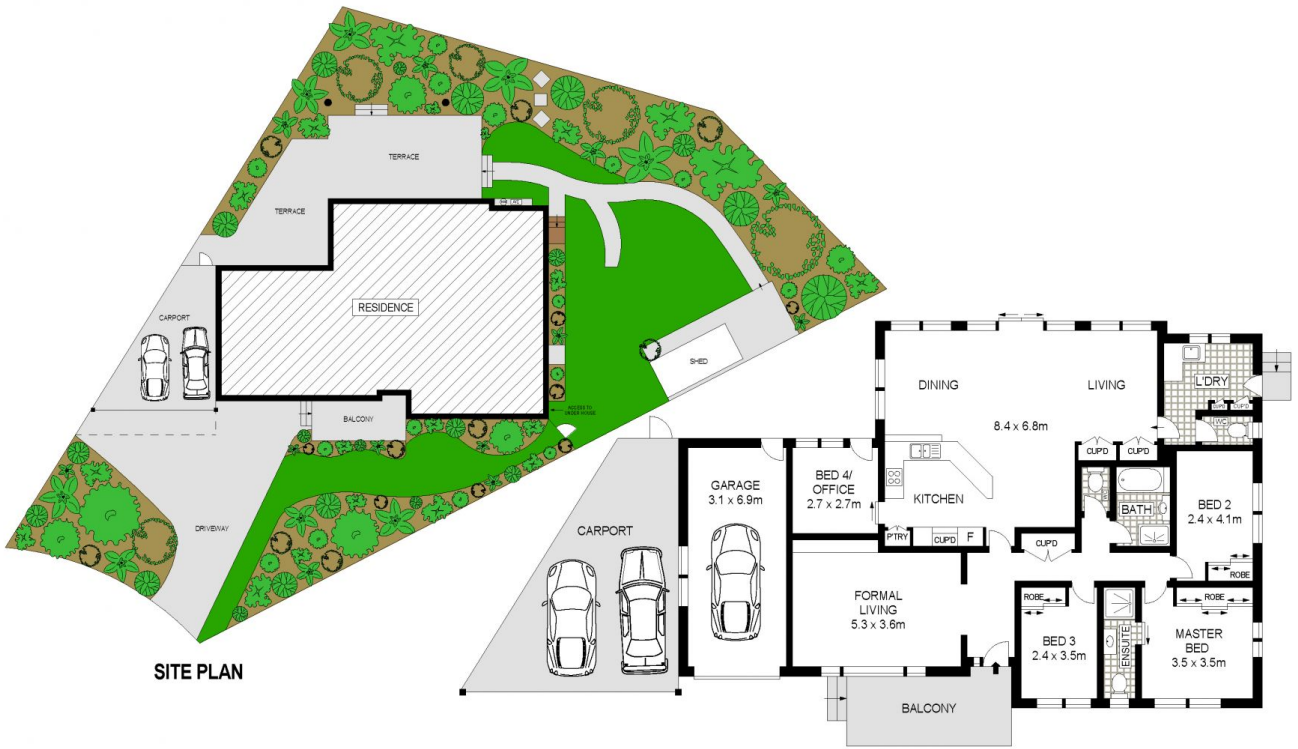


**Craig Taylor**  
02 9481 9000



**James Sheppard**  
02 9481 9000

<https://www.allenandsheppard.com.au>



Dimensions are approximate. All information contained is gathered from sources we believe to be reliable. However we cannot guarantee its accuracy and interested persons should rely on their own enquiries.  
[www.visionphoto.com.au](http://www.visionphoto.com.au)

**2 LYNNE PLACE, HORNSBY**  
 APPROX. INTERNAL FLOOR AREA: 171 SQM

