



ALLEN & SHEPPARD.



2A Tillock Street Thornleigh NSW

3 1 1

This charming 3-bedroom brick home offers a unique combination of peaceful seclusion and transport convenience, situated just a 550m walk from Thornleigh station. Nestled on a large 1,419m² approx block, the property is perfect for those who appreciate a serene garden setting with modern amenities.

Type : House
Price : \$ 1,830,000
Land Size : 1419 sqm
View : <https://www.allenandsheppard.com.au/sale/nsw/northern-suburbs/thornleigh/residential/house/8100788>

Key features of the home include:

- ? 3 Bedrooms: three generous bedrooms with built-in robes and polished timber floors throughout.
- ? Climate Control: ducted underfloor heating (gas) and cooling (air conditioning), plus an additional split system AC in the lounge for year-round comfort.
- ? Kitchen: an open, renovated kitchen with stone benchtops that overlooks the covered rear decks, ideal for

[For full version visit the website](#)

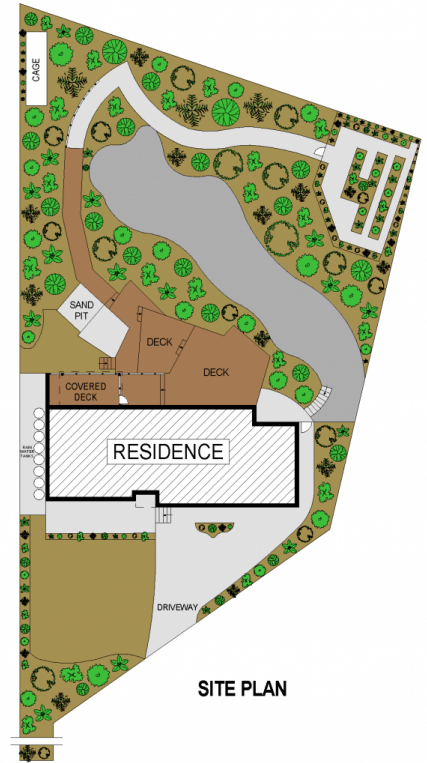
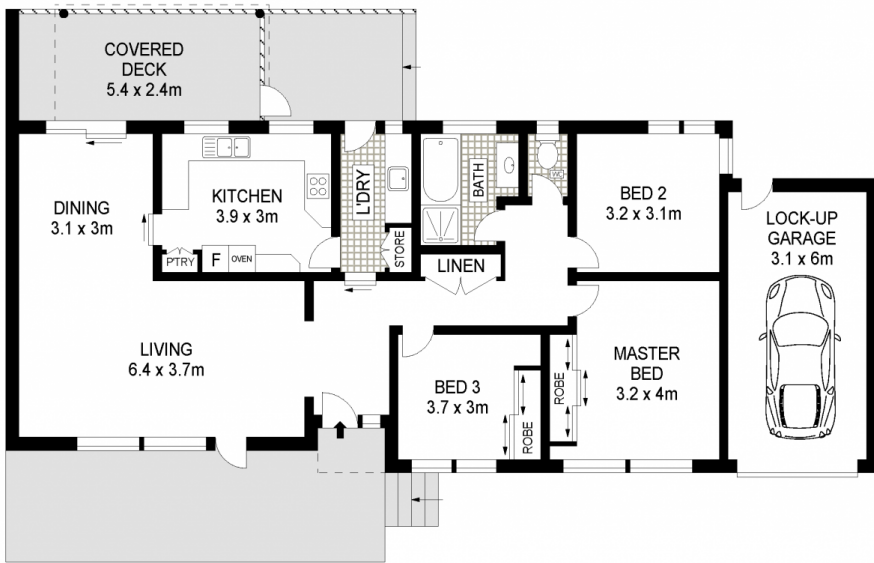


James Sheppard
02 9481 9000



Craig Taylor
02 9481 9000

<https://www.allenandsheppard.com.au>



SITE PLAN

Dimensions are approximate. All information contained is gathered from sources we believe to be reliable. However we cannot guarantee its accuracy and interested persons should rely on their own enquiries.
www.visionphoto.com.au

2A TILLOCK STREET, THORNLEIGH

APPROX. INTERNAL FLOOR AREA: 129 SQM

