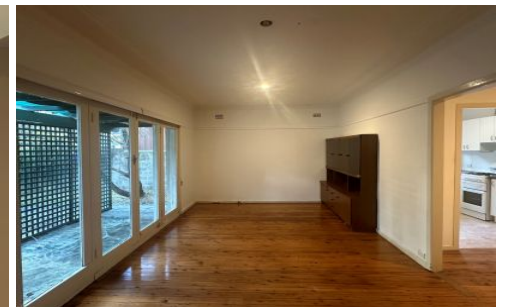




ALLEN & SHEPPARD.



253 Pennant Hills Road Thornleigh NSW

3 1 1

Entry level property located only a few minutes' walk from Thornleigh shopping Village and train station.

Features Include:

- Three bedrooms, main with split system air/con
- One good sized bathroom
- Separate lounge and dining room
- Rumpus room and office space
- Plenty of off street parking and a grassed area at the front of the house

Access to the property is via Hillmont Road - please park on the street.

Type : House

View : <https://www.allenandsheppard.com.au/lease/nsw/northern-suburbs/thornleigh/residential/house/8088662>



Jennifer Biscan
02 9481 9000



Laura Yates