





32 Wells Street THORNLEIGH NSW

3  1  3 

Here is a fantastic opportunity for developers, builders, renovators or just for those buyers wanting a 'big block'. This wonderfully sturdy and charming timber home stands proud, overlooking the large, level and sumptuous lawns and gardens that once incorporated the tennis court.

The home itself is bright and spacious throughout, with high ceilings and an aura of welcoming comfort. There are 3 bedrooms, formal lounge and dining rooms plus a sun room. While extremely liveable as is, the home offers so much scope for a stunning makeover. The land is approximately 1550m² with a very wide frontage and certainly of a size that lends itself to subdivision (subject to council approval).

Type : House

Price : \$ 960,000

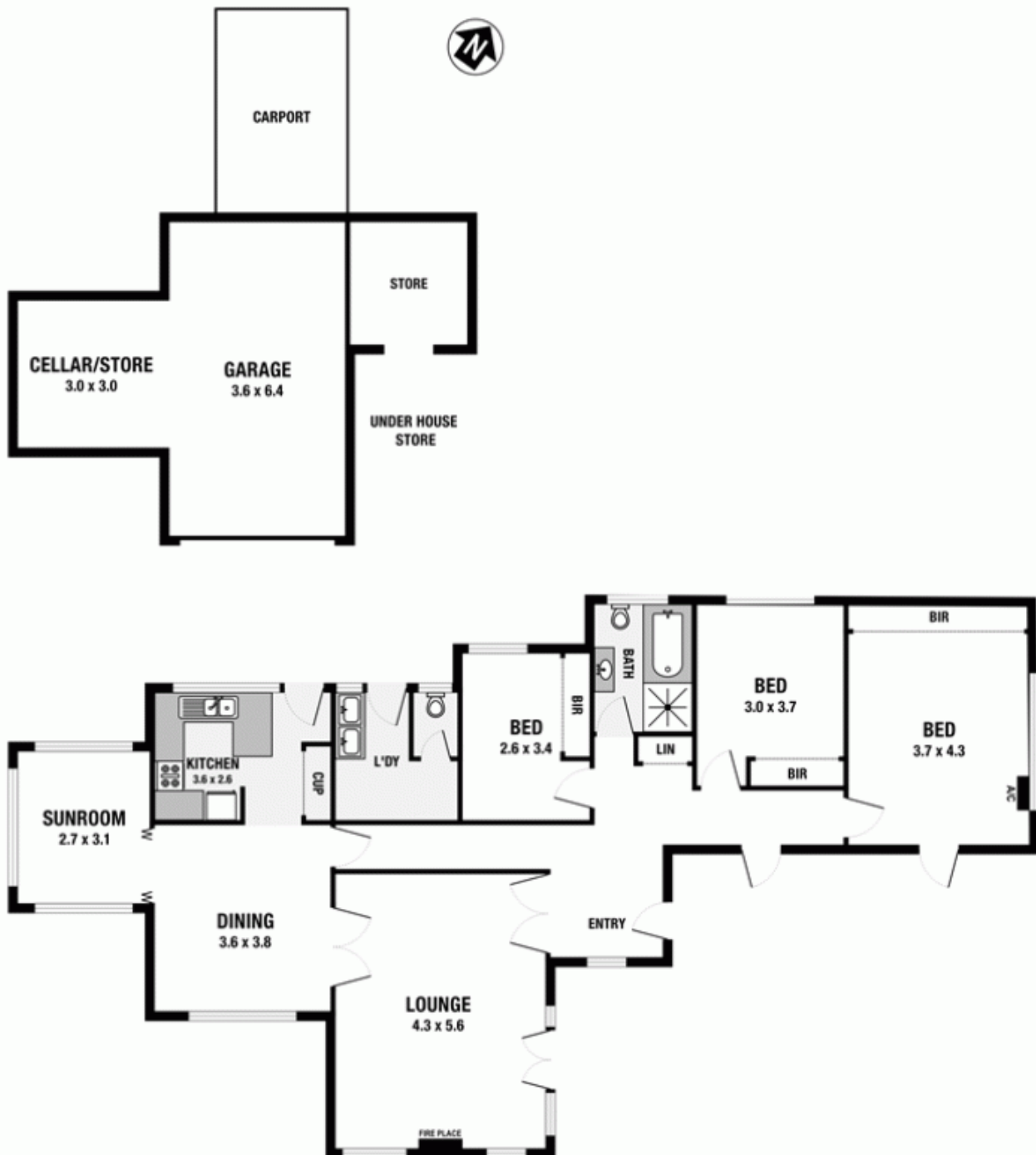
View : <https://www.allenandsheppard.com.au/sale/nsw/northern-suburbs/thornleigh/residential/house/6204368>



Dawn Rule
0408 197 691

[For full version visit the website](https://www.allenandsheppard.com.au)

32 Wells Street, Thornleigh



Please note: All stated dimensions are approximate only. Particulars given are for general information only and do not constitute any representation on the part of the vendor or agent.