



6 Greycliffe Avenue PENNANT HILLS NSW

4  2  2 

Positioned in one of the most sought-after streets in Pennant Hills, this architect-designed home is spacious and offers a flexible and very liveable floor plan. The property does require renovation and would suit a builder or those who want to live in a top location, so close to schools, shops and transport, have a vision and are prepared to put in the effort to bring this very interesting property up to its potential. Accommodation consists of 4 bedrooms (could be 5), formal lounge, large formal dining room, rumpus, study area, 2 bathrooms (1 new) and a large double garage. The land size is approx. 528m² - a perfect size for those who want a backyard big enough to enjoy and not become a slave to the lawnmower. The primary school is across the road and the infants and high school are within a few minutes' walk, as are the station,

Type : House

Price : \$ 667,500

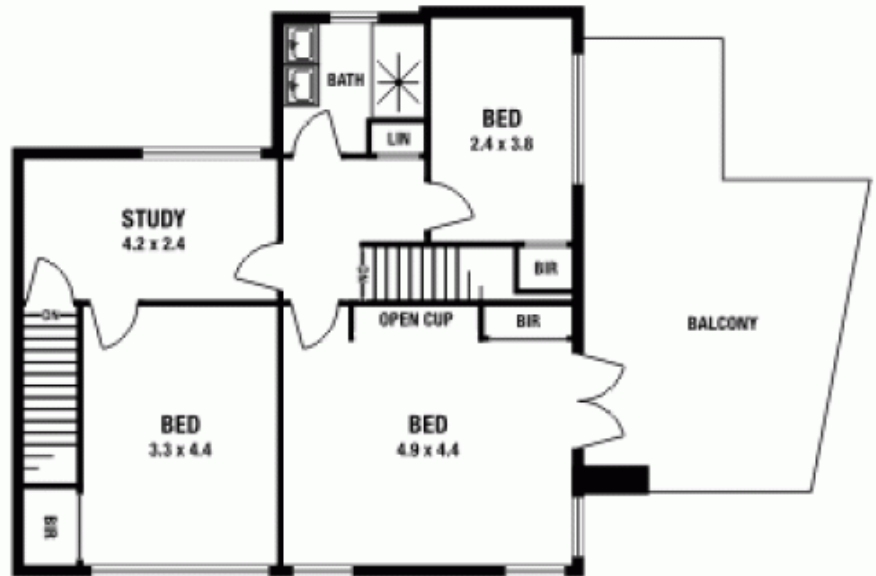
View : <https://www.allenandsheppard.com.au/sale/nsw/northern-suburbs/pennant-hills/residential/house/6204308>



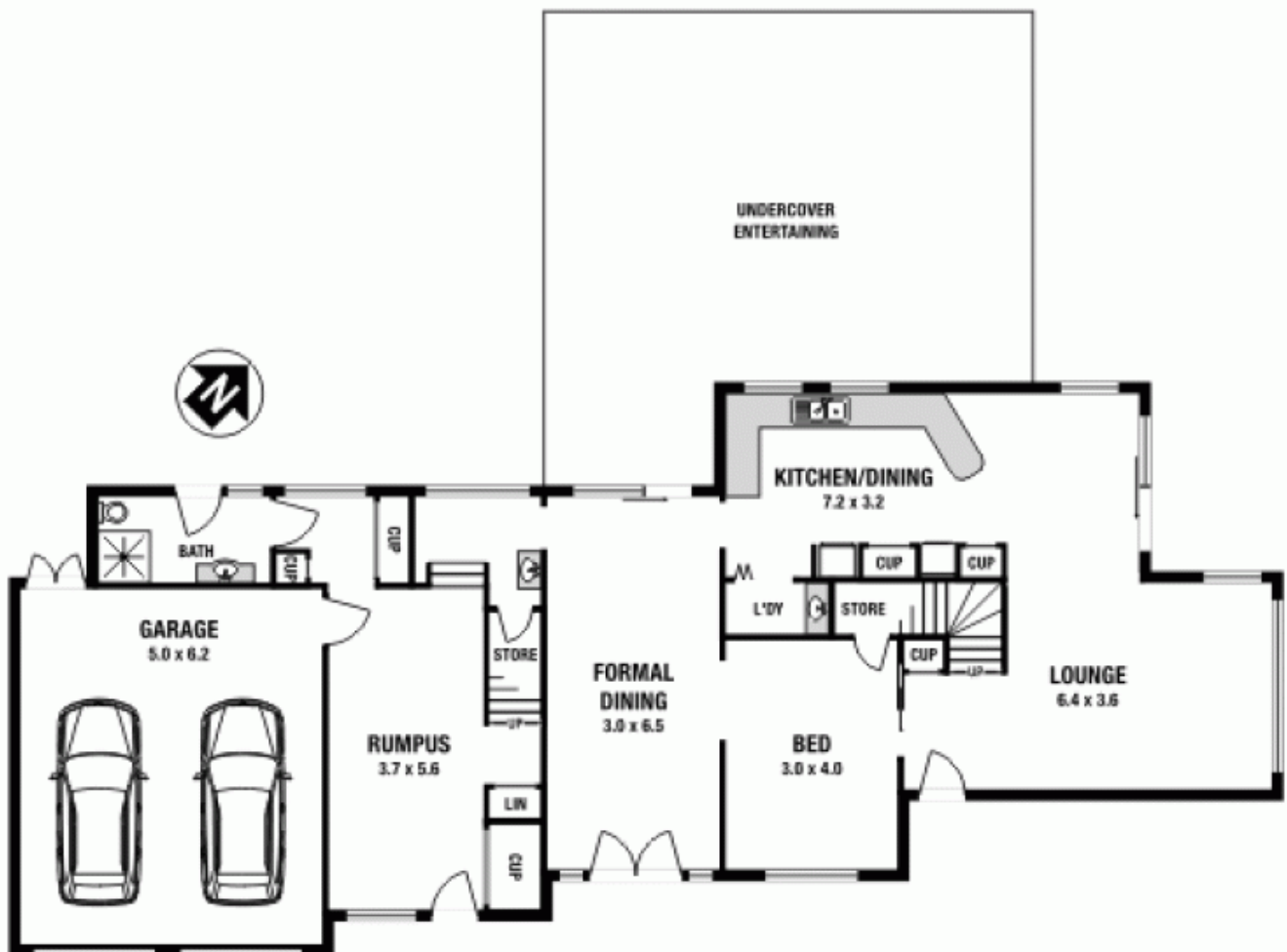
Dawn Rule
0408 197 691

[For full version visit the website](https://www.allenandsheppard.com.au)

6 Greycliffe Avenue, Pennant Hills



FIRST FLOOR



GROUND FLOOR

Please note: All stated dimensions are approximate only. Particulars given are for general information only and do not constitute any representation on the part of the vendor or agent.