






**14 Warrigal Drive WESTLEIGH NSW**

3  3  2 

Relax, unwind & drink in the beauty of the setting & outlook of this stunning property.

Nestling the hillside with a north easterly aspect, over lawns & glorious bushland, this property will soothe your soul.

The home, a tri-level contemporary in design, offers 3 bedrooms, 3 bathrooms & open plan living area accessing a sun-drenched deck- Look out your windows & see the beauty of the bush.

But there's more, downstairs there is a separate granny flat/ teen retreat/ studio- You choose, maybe a studio for an artist or musician. For those with a boat or caravan, as well

**Type** : House

**Price** : \$ 750,000

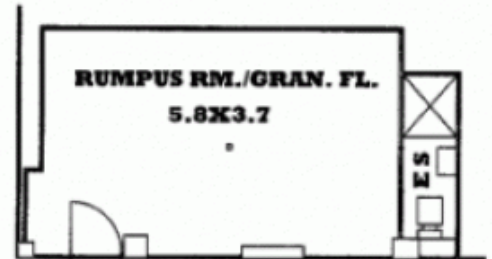
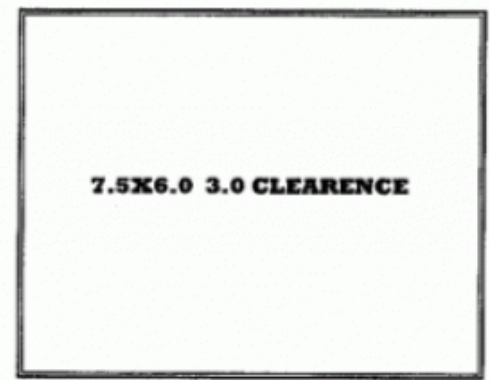
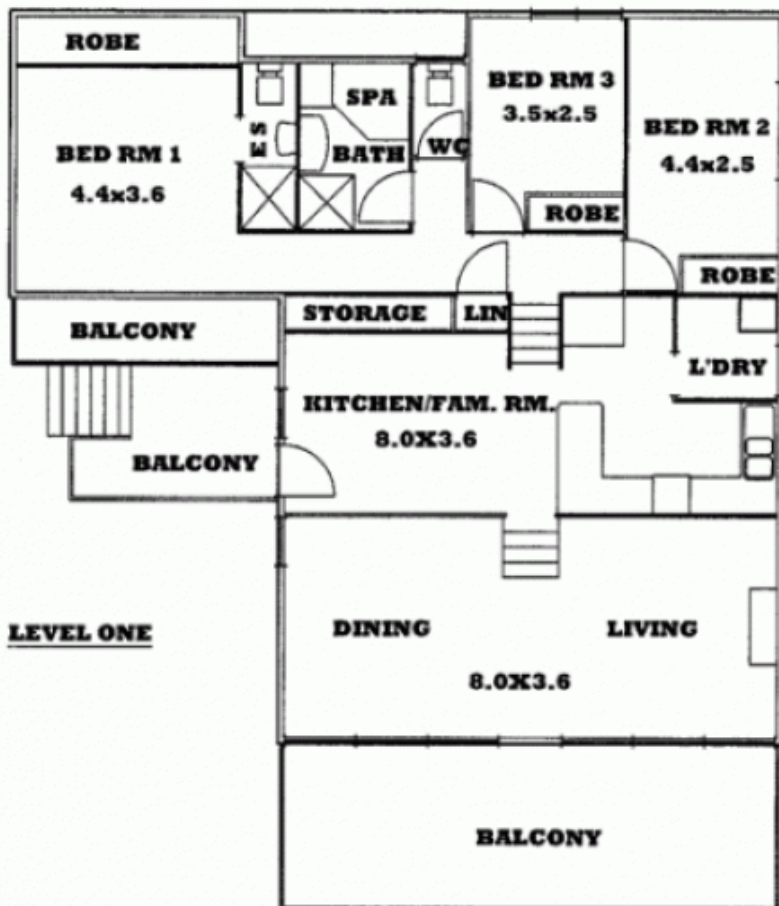
**View** : <https://www.allenandsheppard.com.au/sale/nsw/hills/westleigh/residential/house/6204283>



**Dawn Rule**  
**0408 197 691**

[For full version visit the website](https://www.allenandsheppard.com.au)





**WHILST EVERY CARE HAS BEEN TAKEN IN DRAWING UP THIS FLOOR IT IS APPROXIMATION ONLY. THE ACCURACY CAN NOT BE GUARANTEED AND YOU SHOULD RELY ON YOUR OWN RESEARCH**